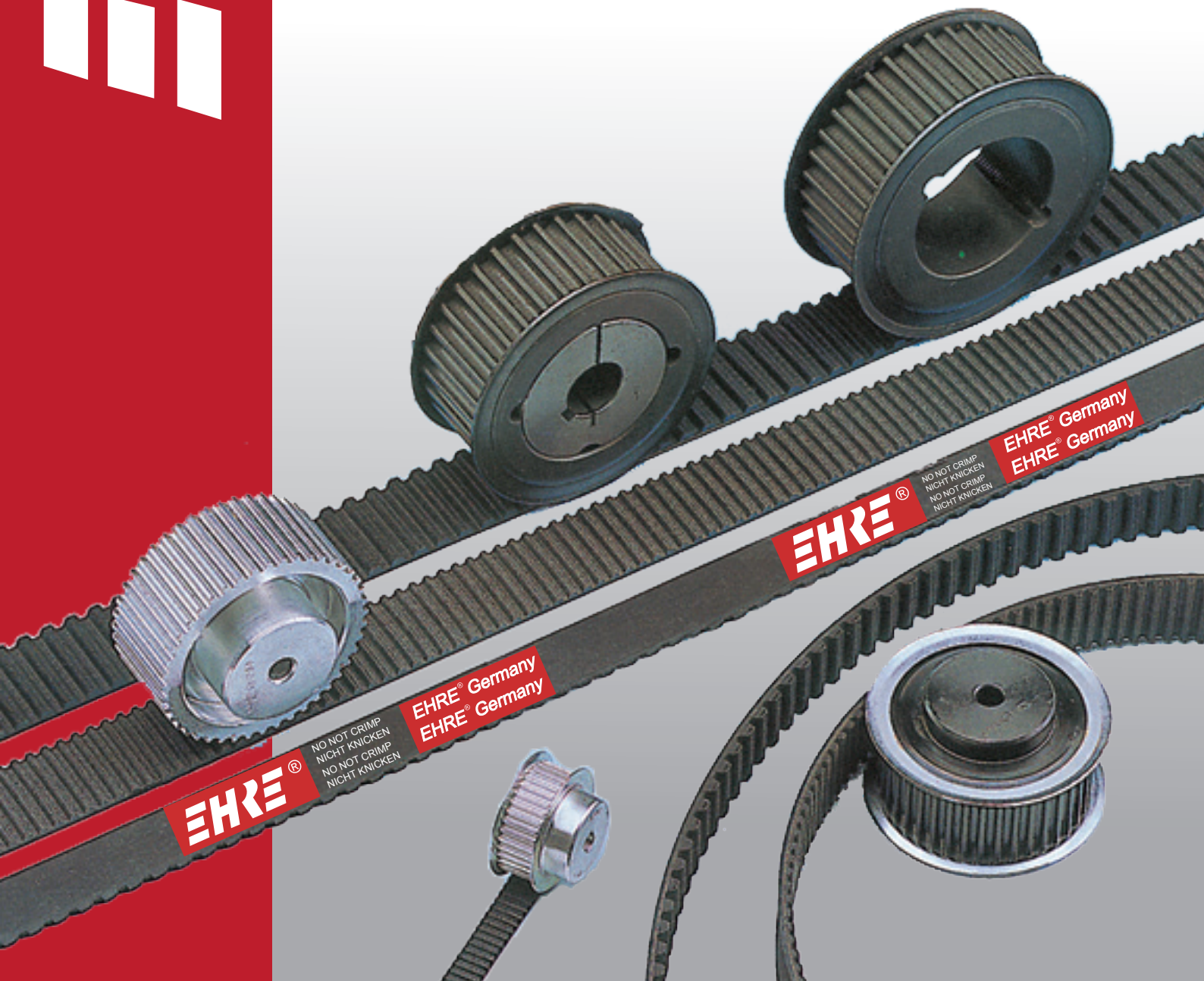


EHRE

EHRE

Product Range of Drive Belts

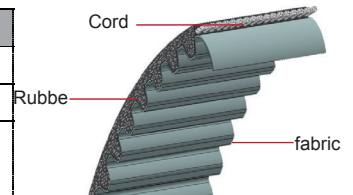


EHRE Timing belt

Adopt high- quality synthetic CR to be the main raw material and multipurpose supplement material. The framework material is high-grade glass fiber cord, which has high strength and high tensile strength. High strength and wear resistance nylon elastic fabric is used on the surface of the tooth, has good wear resistance, excellent flexibility and long life span.and extended service life.

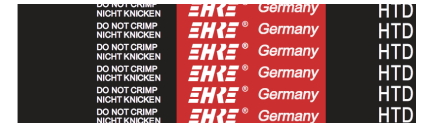
EHRE Timing belt Strength performance reference table

RED series	HP series	IGT series	CARBON series
CR	Aramid fiber CR	Aramid fiber CR	HNBR
Glass cord	High Glass cord	Aramid cord	Carbon cord
High strength Nylon elastic fabric	High strength , Nylon elastic fabric with special treatment	High strength , Nylon elastic fabric with special treatment	PTFE coated fabric



EHRE Red SERIES

Standard product , with excellent performance, meeting the highest application and setting industry standard. Adopt high-grade material and premium formula. It has good running flexibility, crack resistance, ozone resistance, aging resistance, heat resistance, oil resistance, wear resistance and other properties.



EHRE HP SERIES

High-performance timing belts ,suitable for high-speed or low-speed & high-torque drive system.



EHRE IGT SERIES

Adopt aramid cord and innovation processing, combine all the material perfectly. Enhance the wear resistance , and 30% more than red series in product performance.



EHRE CARBON SERIES

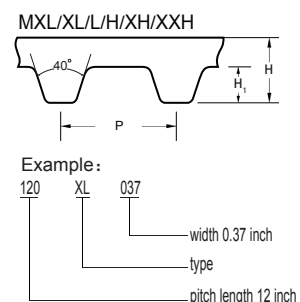
HNBR ,Carbon fiber cord, tooth fabric special processing, High strength, good wear resistance, excellent performance.



Product Series

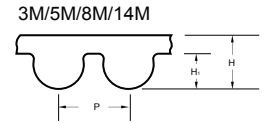
Inch square tooth Timing belt

Specification	Pitch P		Tooth height H1 (mm)	Height H (mm)	RED series	HP/IGT series
	inch	mm			Production range (pitch length)	Production range (pitch length)
					inch	inch
MXL	0.08	2.032	0.51	1.14	5.36"-13.6"	5.36"-13.6"
XL	0.2	5.080	1.27	2.3	7.6"-61.2"	7.6"-61.2"
L	0.375	9.525	1.91	3.6	9.8"-90"	9.8"-90"
H	0.5	12.700	2.29	4.3	18.5"-170"	18.5"-170"
XH	0.875	22.225	6.35	11.2	56"-140"	56"-140"
XXH	1.25	31.750	9.53	15.7	80" 120" 140"	120"



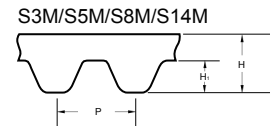
HTD Type

Specifications	Pitch P(mm)	Tooth height H1 (mm)	Height H (mm)	RED series	HP/IGT series	CARBON series
				Production range (pitch length)	Production range (pitch length)	Production range (pitch length)
3M	3	1.17	2.4	141mm-1263mm	141mm-1263mm	141mm-1263mm
5M	5	2.06	3.8	210mm-3000mm	210mm-3000mm	210mm-3000mm
8M	8	3.36	6.0	320mm-3600mm	320mm-3600mm	320mm-3600mm
14M	14	6.02	10.0	784mm-4326mm	784mm-4326mm	784mm-4326mm



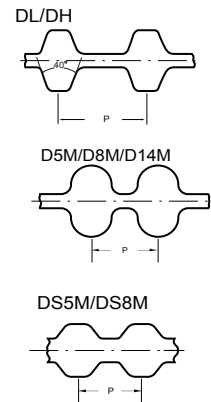
STD Type

Specifications	Pitch P(mm)	Tooth height H1 (mm)	Height H (mm)	RED series	HP/IGT series
				Production range (pitch length)	Production range (pitch length)
S3M	3	1.14	2.2	192mm-918mm	192mm-918mm
S5M	5	1.91	3.4	200mm-2800mm	200mm-2800mm
S8M	8	3.05	5.3	376mm-3360mm	376mm-3360mm
S14M	14	5.30	10.2	966mm-3150mm	966mm-3150mm



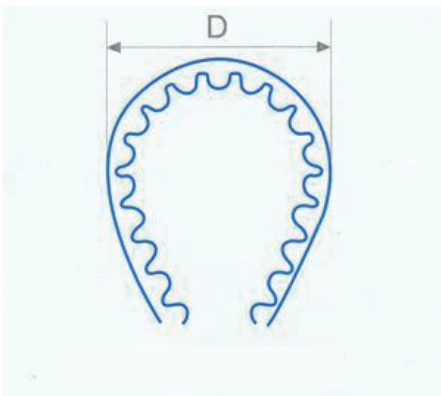
Two-side Type

Specification	Pitch P		RED series
	inch	mm	Production range (pitch length)
DL	0.375	9.525	26"-66"
DH	0.5	12.7	26"-150"
D5M	/	5	600mm-3000mm
D8M	/	8	600mm-3600mm
D14M	/	14	1190mm-4326mm
DS5M	/	5	635mm-2400mm
DS8M	/	8	624mm-2848mm



➔ Rubber Timing Belt Type Option Reference

- Minimum Bending Diameter



Timing belt type	Pitch type	Min bending diameter D(mm)
T type timing belt	MXL	15
	XL	15
	L	20
	H	40
	XH	70
	XXH	100
Arc tooth timing belt	S3M,3M	15
	S5M,5M	25
	S8M,8M	40
	S14M,14M	80

➔ Suggest belt tension

- Reference data

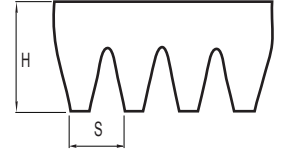
Type	Timing belt/mm								Ribbed belt/Peak				Raw edge cogged belts							
	XL	L	H	XH	3M/S3M	5M/S5M	8M/S8M	14M/S14M	PJ	PK	PL	ZX	AX	BX	CX	XPZ/3VX	XPA	XPB/5VX	XPC	
Static tension (N)	2.7	4.5	12.3	18.8	5	7	12	15.5	50	120	200	180	240	440	700	280	380	750	1450	

➔ Ribbed Belt

Characteristics: adopt high-quality EPDM , good comprehensive performance, good cold resistance, heat resistance and aging resistance, a wider range of applications.

Specifications	Pitch S(mm)	Height H(mm)	Production range (effective length)	Belt speed(m/s)	Minimum pulley diameter (mm)
PH	1.6	2.6	510mm-4600mm	60	13
PJ	2.34	3.2	495mm-5080mm	60	20
PK	3.56	4.2	510mm-4600mm	50	45
PL	4.7	7	500mm-5000mm	40	75

PH/PJ/PK/PL



➔ V-belt

Raw edge cogged belts

Type	Top width (mm)	Thickness (mm)	Angle (°)	Minimum pulley diameter (mm)	Production range	Length definition	Conversion criteria		
							Li-Lp	Lp-La	Li-La
ZX	10	8	36	50	20.5"-190"	Li	37mm	13mm	50mm
AX	13	9	36	71	20.5"-187"	Li	39mm	17mm	56mm
BX	17	11	38	112	20.5"-190"	Li	43mm	26mm	69mm
CX	22	13	40	180	21.5"-190"	Li	38mm	43mm	81mm
XPZ/3VX	9.7	8	40	63	505mm-5010mm	Lp	33mm	17mm	50mm
XPA	12.7	10	40	90	500mm-5065mm	Lp	45mm	17mm	62mm
XPB/5VX	16.3	13	40	140	509mm-5004mm	Lp	55mm	26mm	81mm
XPC	22	18	40	224	505mm-5015mm	Lp	87mm	26mm	113mm

Banded raw edge cogged belts

Type	Top Width (mm)	Thickness (mm)	Angle (°)	Pitch(mm)	Production range	Length definition
HAX	12.7*N	10.4	40	15.9	23"-188"	Li
HBX	16.8*N	12.7	40	19.05	23.5"-180"	Li
HXPZ	10.5*N	10	40	12	600mm-4600mm	Lp
HXPA	13.6*N	12.3	40	15	600mm-4600mm	Lp
HXPB	17*N	16.5	40	19.05	600mm-5000mm	Lp
HXPC	22*N	21	40	25.5	600mm-4600mm	Lp
H3VX	9.7*N	9.7	40	10.3	23.5"-180"	Lp
H5VX	15.7*N	15.7	40	17.5	23.5"-180"	Lp

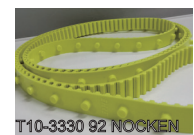
Note: "N" represents the number of peaks; 'Li' represents the inner circumference; Lp "represents the length of the nodal line, and" La "represents the outer circumference.

➔ Special belts

• Seamless belt

Type	Thickness (mm)	Specifications (mm)
FL	1.4	444、520、534、555、1028、1029、1040、1510、1512
	1.8	4525

• Button belt



Service Hotline (China):4001806599、021-62216599
 Asia Pacific : Richard@highten.net Sally@highten.net
 Elin@highten.net David@highten.net

