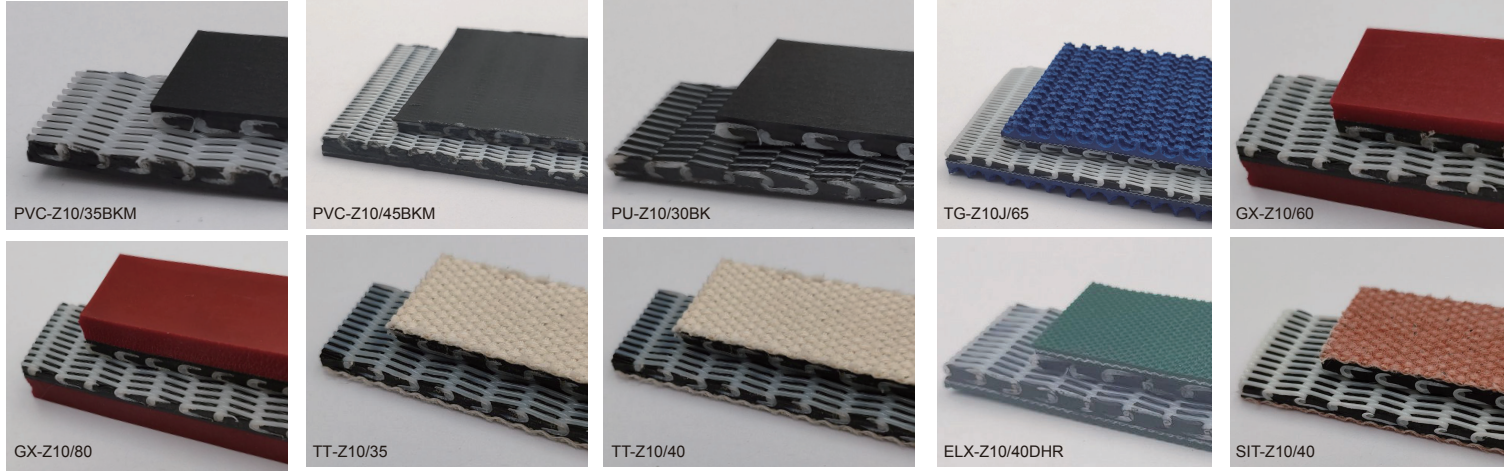


## Ultimate Splice

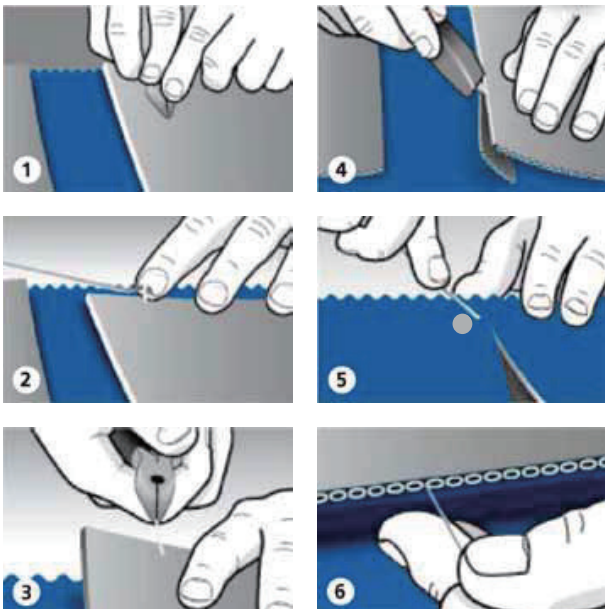
- Quick&Easy
- Safe&Economic
- Minimum Downtime
- No damages to product



### Technical Data:

Ziplink	T	Min Pulley	Weight	K 1%	Working Temp	Application	Color
	(mm)	(mm)	(kg/m <sup>2</sup> )	(N/mm)	°C		
PVC-Z10/35BKM	3.5	50	3.6	10	-10/70	logistics	black/white
PVC-Z10/45BKM	4.5	60	4.6	10	-10/70	logistics	black/white
PU-Z10/30BK	3.0	50	3.1	10	-15/80	logistics	black/white
TG-Z10J/65	6.5	75	6.3	10	-15/80	corrugate & paper	blue/white
GX-Z10/60	6.0	50	6.3	10	-15/80	paper	red/black
GX-Z10/80	8.0	60	8.3	10	-15/80	paper	red/black
TT-Z10/35	3.6	65	4.4	10	-15/80	corrugate & paper	white/black
TT-Z10/40	4.0	80	4.6	10	-15/80	corrugate & paper	white/black
ELX-Z10/40DHR	4.0	80	5.0	10	-15/80	corrugate & paper	green/black
SIT-Z10/40	4.0	80	4.4	10	-15/80	tyre	orange/black

#### Quick Join Process:



#### Belt Tensioning rate 1%-2%



#### Tools

